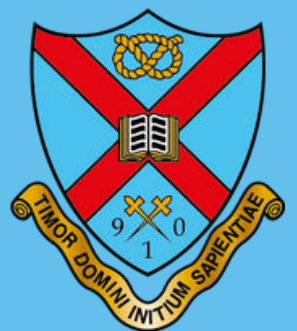




# TETTENHALL COLLEGE

LOWER SENIOR - YEARS 7 - 9  
UPPER SENIOR - YEARS 10 - 11



# SENIOR SCHOOL

# CONTENTS

Headmaster's Welcome	Page 3
Academic Aspirations	Page 5
Wellbeing & Inclusivity	Page 7
Sport	Page 9
Creative & Performing Arts	Page 11
Community	Page 13
Enrichment	Page 15
The Tettenhall Enrichment Programme	Page 16
Curriculum and approach to learning	Page 17
Settling in to life in Senior School	Page 17
The Tettenhall Scholars' Programme	Page 18
Extra Curricular Opportunities	Page 19
Boarding at Tettenhall College	Page 20
Health & Wellbeing	Page 21
English Language & Literature	Page 26
EAL (English as an Additional Language)	Page 27
Mathematics	Page 28
Biology	Page 29
Chemistry	Page 30
Physics	Page 31
Combined Science	Page 32
French or Spanish	Page 33
Art & Design	Page 35
Business	Page 35
Computer Science	Page 36
Drama	Page 36
Geography	Page 37
History	Page 37
Music	Page 38
Physical Education	Page 38
Religious Studies	Page 39
Admissions Process	Page 39



# The Pursuit of Excellence and Care in all that we do

Tettenhall College is much, much more than a school. Education here is broad, inclusive, inspiring and considered. However, absorbing knowledge is no use without the skills and sensitivities to apply it in the real world, today and well into our pupils' futures. Our pupils will become global citizens, and it is our responsibility to ensure they have the personal skills to fulfil this role.

Tettenhall College was founded in 1863. Built on Christian foundations, Tettenhall College today is a modern, diverse community, which inspires meaningful reflection. The guiding principle, of the delivery of both excellence and care, is at the heart of every action each day.

Tettenhall College's core values guide members of the school to pursue Ambition, Character, Opportunity, Creativity and Community in as many ways as possible. Pupils are guided to approach life with grace and integrity, and to treat others with respect and kindness. Woven into every day at Tettenhall College are the strong threads of academic aspiration, community, wellbeing, sporting and artistic excellence, enrichment, and a global perspective.

Rather than one feature, these aspects combine to make Tettenhall College a truly unique place for young people to learn, develop, achieve and acquire the characteristics they need as individuals to engage fully with life.

Our pupils are forever Tettenhallians. We believe that we make a difference to these key years in their lives and help them to develop as individuals of character, so that they are ready to go out into the world and make a difference.

Christopher McAllister – Headmaster



# Academic Aspiration

The academic curriculum at Tettenhall College is high-quality and expertly taught, but what sets it apart is its capacity to excite and inspire our pupils. Choices at all ages encourage individuals to explore their academic interests and to learn in the style that best suits them. A commitment to the pursuit of further knowledge and understanding underpins our educational philosophy where a love of learning and a thirst for academic success are constants.

**Outstanding use of data for pupil progress** - The experience and expertise of our teaching staff is complemented by high quality data recording systems to support them further in understanding the pupils as individuals and ensure that parents know exactly how their child is progressing.

**Future-focused curriculum** - The Tettenhall College curriculum is focused on teaching the relevant knowledge and skills that will prepare pupils for the life and careers of tomorrow. Tettenhall College's dedicated Careers and University Guidance Team provides mentorship and support on entrance to universities, apprenticeships and the workplace, all beginning well before pupils progress into sixth form.

**Modern languages offer** - An increasingly globalised economy relies on communication and our pupil's linguistic abilities will remain an asset to them. Pupils are introduced to modern foreign languages from the youngest years, and this develops into a full and varied language programme as they move up the school. Languages are a popular choice at GCSE whilst also featuring each term within our Enrichment Programme.

**Strong creative offer** - Creativity of thought and expression fuels the music, performance and expressive arts that enrich our lives. Showcases of art, drama and music are inspirational and cultivate professional pathways beyond Tettenhall College.

**Academic societies & leadership opportunities** - Critical thinking thrives at Tettenhall College and there are many forums for pupils to discuss their interests, share thoughts and ideas, and embrace leadership responsibilities with like-minded peers in a fun and challenging environment.

**EPQ & HPQ** - Most of our sixth formers undertake the Extended Project Qualification (EPQ), which develops key transferable skills such as independent research, time management, and critical thinking – all of which are excellent preparation for university and careers.

The Higher Project Qualification (HPQ), offered in Year 9-11 offers excellent preparation for this valuable qualification which demonstrates a wider range of research, analysis and communication skills.



# Wellbeing & Inclusivity

Tettenhall College is focused on understanding and developing all aspects of each individual pupil, with academic and pastoral staff working together to support every young person in their care. Focusing on the needs of every individual is at the heart of what we do each day.

**Wellbeing provision** – Tailored to the needs of the individual, our Personal, Social and Health Education, Counselling and Peer Counselling, Mental Health First Aid Training and Academic Support, all combine to ensure the wellbeing of the Tettenhall College community.

**Pupil voice** – From catering and sustainability to equality and diversity, pupil-led committees help to recognise and remove potential barriers to individuals' participation in all that Tettenhall College has to offer.

**Excellent PSHE Programme** – Pupils of all ages are encouraged to prioritise and take care of their own wellbeing through PSHE and practical sessions, including many expert visiting speakers.

**Data tracking and monitoring** – Information on pupil's wellbeing is carefully gathered through a blend of pupil voice opportunities alongside attitudinal data which feeds into our care and support for our learners.

**Specialised safeguarding team** – Tettenhall College's team of experienced and highly qualified safeguarding leads respond immediately and appropriately to any concerns. A group of trained pupils offer listening ears through our Peer Support and Mentoring Programme.

**Inclusivity & openness** – The concept of Equity, Diversity and Inclusion is introduced to our pupils at the youngest age through appropriate themed lessons and activities.

**Promoting positive behaviour** – We expect the very highest standards of behaviour, excellent manners and an awareness of the impact that our individual behaviour can have on those around us, from all within our school community. Each classroom displays our non-negotiable rules regarding manners and behaviour, and it is a pleasure to see these modelled by pupils of all ages on a daily basis.

**Nutrition and Sleep** – We recognise the important roles that sleep and nutrition play in a young person's health, wellbeing and learning. Tettenhall College has been awarded Sleep Champion status by the Boarding Schools Association (BSA) and our outstanding in-house chefs prepare tasty and balanced meals with plenty of options, as well as opportunities for healthy snacks.



# Sport



Tettenhall College has a strong tradition of sporting excellence. We have a significant number of pupils who are regional, national and, in some cases, international champions in their chosen sports. We offer excellent sporting facilities, a range of specialist coaching and a number of sports academies.

**Sport for all** – At the same time, absolutely everyone can play at Tettenhall College; pupils aged 4–18 are encouraged to develop a healthy attitude to fitness and exercise and to participate in individual and team sports in PE sessions and co-curricular activities. While we have high-achieving pupils who compete at top levels, our sports programme is designed to ensure that every pupil can grow, be challenged and excel.

**Teamwork and challenge** – We value sport for its ability to build teamwork, commitment and grit. We value sport for its ability to build confidence, stamina and strength. Most importantly, we value sport as a vehicle for promoting wellbeing and perspective in a world which presents a host of pressures to our young people.

**Health and fitness** – Our inclusive programme is designed for everyone. Our aim is to encourage pupils to find a sporting activity they love and to provide a basis for life-long fitness and participation. Sport is played in formal lessons, and our house system offers a wide range of sports in which all our pupils can compete. The role of team captain is an excellent opportunity to develop leadership skills and to contribute to the life of the school. The opportunity to represent the school in sport is one that is highly valued.

**Wealth of sporting options** – Alongside the core team sports of football, hockey, rugby, netball, cricket and rounders, the sports programme at Tettenhall College offers a wealth of wider opportunities. These include, but are certainly not limited to athletics, swimming, tennis, badminton, squash, basketball, volleyball, cross country, fencing, laser shooting and the newly emerging pickleball.

**Representing our school** – We enjoy an active and challenging fixture list throughout the year, often with great success. However, whilst we are committed to the best possible outcomes, we are also proud to ensure that all pupils who wish to represent the school, have an opportunity to do so.

**The Scholars' Programme** – Sport Scholarships are available for pupils who show potential, and pupils with the talent, commitment and determination to make sport a professional career and take advantage of personalised development programmes. For those who don't initially achieve an award, they still have access to the same outstanding coaches and wide-ranging opportunities while at school.



# Creative & Performing Arts

With a wonderful, historic theatre right in the heart of our school grounds, it is no surprise that we offer outstanding performing arts opportunities for all our pupils at Tettenhall College.

**Performance opportunities** – The Towers Theatre plays host to the annual spectacular full-scale musical productions and plays which are a highlight of the school calendar. We encourage our pupils to pursue their dreams, with prestigious institutions such as RADA and the Royal Shakespeare Company amongst the destinations of some of our leavers.

**Supporting behind the scenes** – The productions are not only important for the people up on stage; sound, lighting and stage management are vital parts of the magic too, and many of our pupils have gone on to careers in these areas. Whether backstage, in the chorus or taking a leading role, our productions are a true team effort and epitomise the spirit of our school community. They provide memories which last long after the last round of applause has faded.

**Advanced study of performance** – For pupils who are keen to pursue Performing Arts at a senior level, perhaps with a view to continuing this as a career path, we offer a CTEC in Performing Arts. This is an outstanding chance to study drama, dance, music and performance with specialist tutors and a wealth of opportunities to rehearse, perform and grow.

**Superb Art facilities** – For those pupils who are keen artists, our wonderful art department offers an outstanding creative space for pupils to work and develop their skills in. For our older pupils, we have dedicated art studio spaces, where they can allow their work to evolve, develop and refine. We also have bright and large art classrooms, with specialist facilities for textiles, graphic design, ceramics and sculpture, including a full-size kiln.

**A wealth of musical options** – Our music department is a vibrant, exciting and welcoming place, where music of all genres is learned, practiced and performed. We have a range of instrumental ensemble opportunities, alongside the College orchestra. There are regular performance opportunities throughout the year, with both new performers and those who are more experienced and accomplished, warmly encouraged to take to the stage. We also have a number of options for those who love to sing, with our choirs and smaller vocal groups offering a diverse repertoire and chances to compete in music competitions.

**Visiting specialists** – Across drama, performance, art and music, we regularly welcome visiting specialists for a range of masterclasses and workshops. These are designed to inspire our pupils, allowing them to embark on new creative journeys and perhaps discover talents that they previously did not know that they have.



# Community

A family ethos is at the heart of our community with outstanding boarding provision. We believe that community and nurture are the heartbeats of our boarding ethos and, whether boarding or day, every pupil benefits from the 24-hour, seven days-a-week, award-winning boarding culture. Boarding at Tettenhall College has been carefully designed to meet pupils' individual needs and wellbeing, leading to confident individuals who go out into the world to make a difference. Of course, boarding is also fun!

**Innovative approach to boarding** - There are a choice of options to suit families: full (seven nights a week), weekly (five nights), and a flexible option for those who live more locally but who benefit from the option to stay if this helps with work or other family commitments. This is also particularly popular around examination periods and when our pupils are involved in performance rehearsals or other school commitments.

**Excellent pastoral care** - Each house is a warm and welcoming community with its own family atmosphere. Our house parents live within the boarding accommodation, so there are always experienced and nurturing adults on hand to support pupils pastorally and academically.

**Personalised evening study support** - In the evenings, boarders study in the dedicated study centre, where there are spaces conducive to either group or independent study, and boarding tutors are on hand to offer individual support when needed.

**Boarding activity programme** - Each weekend our boarders are offered a range of fun and interesting trips and excursions including trips to bowling, ice skating, waterparks, theme parks and to cities such as London, Birmingham, Oxford and Manchester.

**Pupil leadership** - Pupils become very settled in their houses and older pupils are keen to take on roles of responsibility within the house to help other boarders make the most of the experience.

**Bursary funding to widen accessibility** - Means-tested financial assistance is available to ensure that pupils from a range of backgrounds have the opportunity to board and benefit from all that Tettenhall College has to offer.

**Charity support** - Tettenhall College has a long tradition of making a difference and our pupils lead the way in organising and taking part in activities to support our core charities, volunteering with community projects and promoting a sustainable future.

**Parental and Alumni Network** - Throughout each year there are a wide range of opportunities for parents and families to come together socially, and at events designed to support our wonderful school. Highlights of the year include our huge community bonfire and fireworks display, an evening that we all look forward to all year. We also regularly welcome our active alumni community back to their school regularly, with many generously supporting our pupils through guest lectures, mentoring and with opportunities for work experience.



# Enrichment

Our extensive co-curriculum extends our pupils' academic learning and challenges them to test their limits, try new things and develop themselves as individuals.

**Dedicated time** - Whilst Tettenhall College offers a broad and varied programme of extra-curricular activities throughout the week, every Thursday afternoon during term time we offer a longer Enrichment Session where a wide range of interesting, challenging and fun activities are enjoyed by all. Each term, pupils from Year 6 upwards select their choice of activity, club or programme and pursue this for the duration of that time. This allows pupils to learn new skills, demonstrate progress and experience achievement in their chosen pursuit. The activity schedule is updated and changed each term so pupils can have chance to make new selections at the start of each term and have as many great experiences as possible.

**Physical and outdoor pursuits** - Whilst our sports programme offers a wide range of individual and team pursuits, the physical options offered as part of the enrichment present alternative and often new challenges. Onsite options include Rookie Lifeguard, Modern Pentathlon, Advanced Running Club, Fitness, Dance Club and Bootcamp. We also take advantage of excellent local facilities to enjoy horse riding, golf, climbing and indoor tennis.

**The Arts** - Each term brings new creative opportunities with Theatre Technology, Art History Club, Historical Film Society, Craft Club, Portrait club, Lace Making, Manga & Anime Club, and Comic Strip Club, all very popular options.

**Wellbeing** - Having the opportunity to spend time mindfully has become very important to many young learners. Yoga & Pilates, Bullet Journaling, Tabletop Gaming, and Rambling are just a few of the options available.

**Personal Development & Life Skills** - Whilst academic achievements are fundamentally important, the development of skills that will positively impact our wider lives is of equal significance. Cookery, Debating, Charity & Fundraising, and Volunteering opportunities are all choices that are hugely popular.

**STEM & Technology** - The pace of technological development continues to dominate the modern world, and it is essential that our pupils have the knowledge and critical thinking skills to engage with these in the most effective and safe ways possible. The STEM and technology enrichment options remain some of the most popular, with options including Medical Society, Whizz Bang Science, Coding Club, Science Research Club and the Robotics Club.

**Politics, Culture & Enterprise** - An awareness of, and an engagement with, the national and global landscape allows our pupils to embrace their role as global citizens. Whether this be the world of politics, business, media or diplomacy, options including Model United Nations, World Scholars' Cup, Virtual Investors Society, Mock Trials, Content Creators Club, all stimulate discussion, awareness and debate.

# The Tettenhall Enrichment Programme

Tettenhall College is highly regarded for the breadth and depth of opportunities offered to pupils of all ages across the school. A key part of this provision is delivered by our Enrichment Programme, which takes place on a Thursday afternoon, each week during term time.

The Enrichment Programme is an exciting suite of co-curricular and extra-curricular activities, which aim to broaden a pupil's range of experiences, or harness existing areas of interest. Each term around thirty options are available covering physical pursuits, the arts, technology, business and entrepreneurship and much more. A pupil will follow that particular activity for the full term, before choosing a new option for the start of the next. Below are some examples of the activities available to pupils at Tettenhall College (options vary each term):

PHYSICAL & OUTDOOR PURSUITS	THE ARTS	PERSONAL DEVELOPMENT & LIFE SKILLS
Fitness	Theatre Technology	Historical Film Club
Climbing at Wolf Mountain	Historical Film Society	Rookie Lifeguard
Golf & Driving Range	Manga & Anime Club	Duke of Edinburgh Award
Horse Riding at Hatton Stables	Comic Strip Club	Chess Club
Squash Club	Craft Club	Voluntary Work
Advanced Running Club	Art History Club	Modern Foreign Languages Club
Fencing	Lace Making	Latin & Greek Myths Club
Basketball	Portrait Club	Cookery Club
Volleyball	School Play/ Musical	Local History & Architecture
Girls' Football	WELLBEING	Wildlife Club
Laser & Target Shooting Club	Yoga & Pilates	Charity & Fundraising
Modern Pentathlon	Table Top Gaming	Harry Potter in Spanish
Bootcamp	Jigsaw Puzzling	Debating Society
Dance Club	Bullet Journaling	STEM & TECHNOLOGY
Tennis	Rambling	Medical Society
POLITICS, CULTURE & ENTERPRISE		Whizz Bang Science
Economics Club	Virtual Investing Competition	Coding Club
World Scholars Cup	Mock Trials	Science Research Club
Model United Nations	Content Creators Club	Robotics Lego Club

# Curriculum and approach to learning

As well as a strong emphasis on the core subjects of English, Mathematics and Science we consider languages to be important, and so offer French and Spanish within our core timetable. Creativity abounds in our Art, Music and Drama programmes, and History and Geography lessons teach pupils about our world, both past and present.

Computing offers exciting possibilities to understand and control new technologies. Physical Education and Games encourage health and fitness, as well as providing opportunities to acquire and develop skills and attitudes to individual endeavour and teamwork. Add to the mix the moral and ethical dimensions discussed in PSHE and Religious Education and you have an academic programme that is broad and balanced, enjoyable and intellectually demanding. EAL is offered as a specialist subject throughout Senior School.

Detailed and accurate tracking and monitoring is underpinned by our use of the Cambridge CEM Assessments Programme, with pupils taking MIDYIS tests in Year 7, YELLIS tests in Year 10 and ALIS tests in Year 12. These tests measure developed ability – pupils' underlying learning potential – rather than achievement based on the curriculum, and so form an excellent way to identify the learning profile of the pupil. Based on this, and our own knowledge of the pupil, we can produce strategies to build on strengths and target areas that may need extra support.

Our aim is to ensure that every pupil maximises his or her academic potential, and so academic progress is measured and tracked by regular progress checks, the results of which are reported to parents.

## Settling in to life in Senior School

The move to Senior School can be both exciting and daunting. At the heart of a smooth and successful transition is ensuring a child feels confident, secure and happy in their new environment, alongside those with whom they learn each day. In every child we aim to develop a spirit of curiosity, a sense of self-worth and the highest standards of behaviour, whilst supporting them in maximising their potential.

Prior to children joining us in Senior School, whether they are already at Tettenhall College in our preparatory division, in a local feeder school, or overseas, we ensure each pupil has a number of opportunities to visit, have taster days and familiarise themselves with their new school. At the start of the new academic year, we have a dedicated welcome day for our new Year 7 cohort, giving them a full day to explore, meet their teachers, begin building new friendships and having fun. Whilst the hard work soon begins, we also offer a weekend bonding trip to an activity centre, taking our new pupils into the great outdoors, challenging them to step out of their comfort zone, and allowing a fantastic sense of achievement to take hold.

Parents are also warmly invited to join us at a series of welcome events, which deliver important information, and also offer a more social opportunity to meet others who they perhaps do not know yet. Community is at the heart of so much here at Tettenhall College, and we look to facilitate this for everyone, as quickly as possible.

# The Tettenhall Scholars' Programme

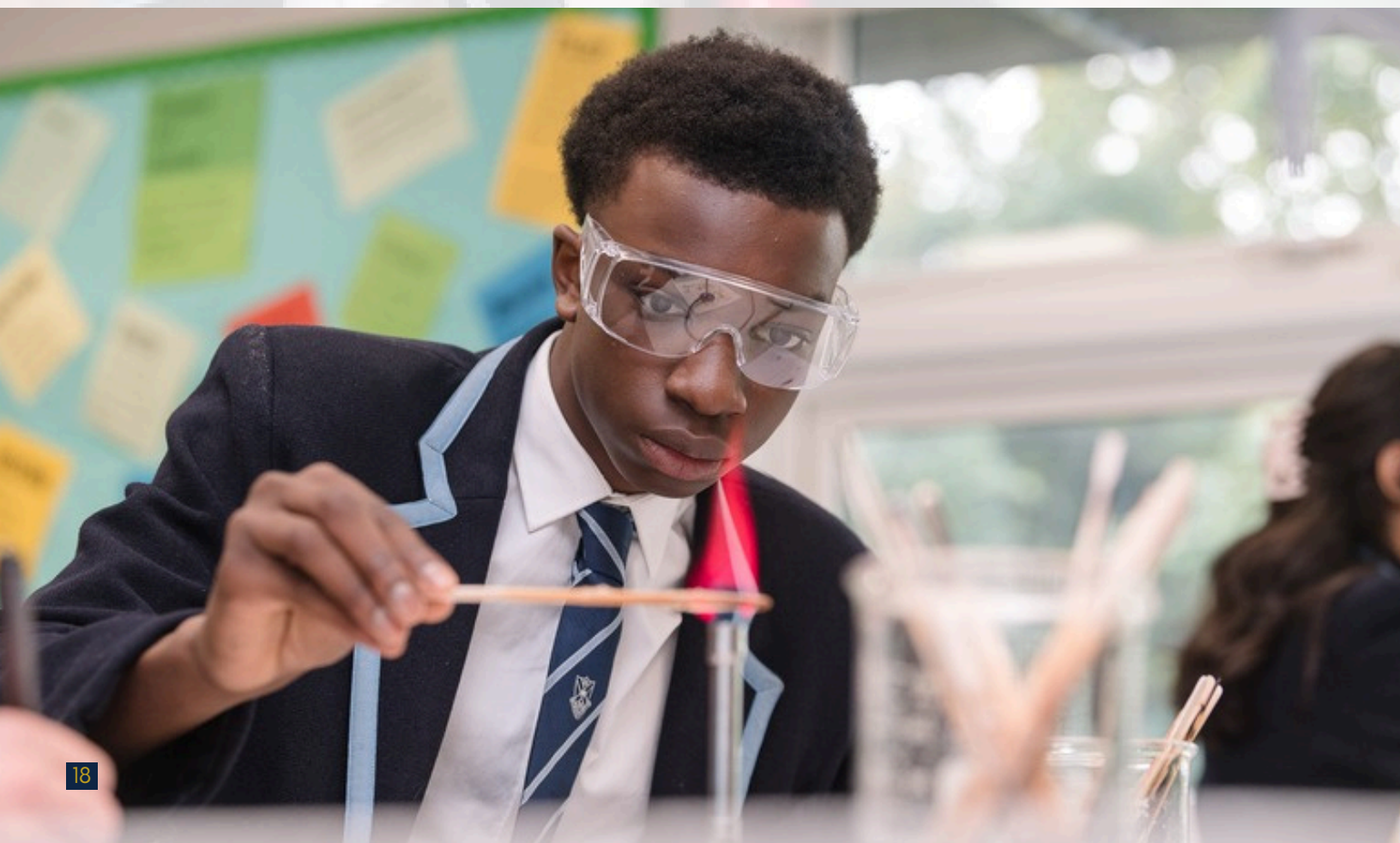
Scholarship at Tettenhall College is a significant, foundational and active process, quite different in many ways to the traditional programmes seen in other schools. Each year scholarships are applied for when entering the School in Year 7. They may also be applied for by current pupils upon them entering Year 9 and Year 12. At Tettenhall College, scholarships are awarded for excellence in Academics, Music, Art, Sport and Performing Arts. Such an award is made after a structured assessment process that considers a pupil's current level of attainment, alongside their potential. Attitude and an understanding of the importance of scholarship are also important aspects of the assessment process.

Scholarship is a way for learners to expand their knowledge of specific subjects and the world at large. It is preparation for further study and a future career. Scholars' tasks, via the Senior Challenge Programme at Tettenhall College are ambitious, allowing pupils to broaden their minds and to work towards ever increasing personal ambitions. The Senior Challenge Programme tasks allow for creativity and expression, positively encouraging the learner to shape their opinions, to analyse, review and to devise solutions. Whilst many tasks involve a written report or essay, others involve practical work of many types whether this be in our laboratories, our theatre, on our pitches or in our art studios.

All awarded Academic Scholars are required to complete one task per half term within their chosen career pathway. Scholars in Music, Art, Performing Arts and Sport are required to complete one task per term. Pupils will work closely and directly with the subject leader.

All other pupils in the senior school are warmly invited to select tasks from the Senior Challenge Handbook and complete these. We hope that all pupils will take the opportunity to participate in this programme so that they can experience the challenge of independent study, the pleasure of wider learning and the success of achieving the objectives laid out in the tasks.

At the end of each term, certificates are awarded in assemblies to all pupils who have successfully completed Senior Challenge Programme tasks.



# Extra Curricular Opportunities

## Sports & Fitness

Sport plays a major part in life here at Tettenhall College. Whether it is high level competitive sports, recreational games or a focus on personal fitness, we recognise that a pupil's health and wellbeing is fundamental to their ability to focus, have confidence and thrive. Pupils can take part in a very wide range of sports, both through their weekly timetable, through the extra-curricular options and the very popular Enrichment Programme.

The traditional sports of rugby, football, cricket, hockey, netball and rounders remain strong features of the sports programme and fixture lists. However, the scope of sport at TC goes well beyond. Other opportunities include:

- Athletics, both track and cross country;
- Tennis, underpinned by a thriving partnership with Wolverhampton Lawn Tennis Club;
- A hugely successful Swim Academy, with pupils regularly taking part in and winning national competitions;
- The TC Squash Academy: offered at all age groups and abilities, our academy is succeeding regularly at regional and national levels.
- Basketball
- Volleyball
- Fencing
- Strength & Conditioning in the College gym
- Modern Pentathlon
- Badminton
- Yoga
- Pickleball

Off site, we are also pleased to offer:

- Horse Riding
- Golf
- Climbing
- Indoor tennis

## Adventure & Exploration

In addition to the opportunities offered by the Duke of Edinburgh Award, Tettenhall College also looks to widen horizons and provide challenging experiences through our exciting programme of trips.

Here in the UK, pupils can take part in curriculum specific trips, such as history trips to local historic sites, science trips to listen to university lectures or the geography annual residential.

Yet we are always keen to travel further afield, and recent trips have included a regular ski trip to Europe, an amazing biology expedition to Ecuador, a fabulous performance music trip to Paris, language trips to France and Spain, and a fantastic business, economics and maths trip to New York City.

Whether it is a subject specific trip, music performance trip or sports tour, pupils at Tettenhall College are regularly offered the chance to explore the world, whilst guided and supported by their dedicated teachers.

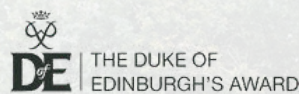
## The Arts

We are exceptionally lucky to have the historic Towers Theatre located in the heart of our beautiful school campus. For generations, fantastic performances have been held in this full-scale performance space, with audiences entertained each term as they view concerts, musicals, plays and other productions.

Our school choirs and orchestra regularly perform, and we are always keen to welcome new members, whether they are high level musicians, talented singers, or enthusiastic participants. One to one lessons with hugely talented specialist teachers are available in a wide range of instruments. There are opportunities for everyone to shine.

For those who are keen to further develop their art skills, we are pleased to offer dedicated art studio spaces, where projects can be developed and refined. Whether working with painting and fine art pieces, textiles, ceramics, photography, graphic design or 3D work, there are a wealth of options for you at Tettenhall College.

As well as our in-house specialists within our music, drama and arts departments, we are pleased each term to welcome professional artists who generously deliver workshops and masterclasses to pupils across the senior school.



Every year The Duke of Edinburgh's Award (DofE) inspires hundreds of thousands of young people to develop skills, resilience and self-belief. Through the DofE, they take on their own challenges, follow their passions, make a difference to their communities and discover talents that they never knew they had.

Tettenhall College is proud to offer the DofE programme to all pupils from Year 9 upwards, beginning with the Bronze Award and then working with pupils to allow them to progress through the Silver Award and then on to the hugely well-regarded Gold Award. An additional benefit of securing the Gold Award is that its completion also brings extra UCAS points.

## Religion & Culture

It would be difficult to find a more naturally diverse and multi-cultural school than Tettenhall College, whether this be in the state or independent sector, day or boarding. Through both the local community where we live and by welcoming a wonderful international boarding community, Tettenhall College allows pupils to study, play, live and grow amongst a broad range of people, fostering a global perspective and a level of global connectivity quite unique in our area.

We are a community of people who all come together and demonstrate each day that through connectivity, positivity, communication and respect, we can all contribute to making our world and the world at large, a stronger, happier and better place.

# Boarding: Flexi, Weekly & Full options

A core part of life here at Tettenhall College is our vibrant boarding community. With around 100 boarders from at least 25 different countries including the UK, life in our houses is busy and full of fun.

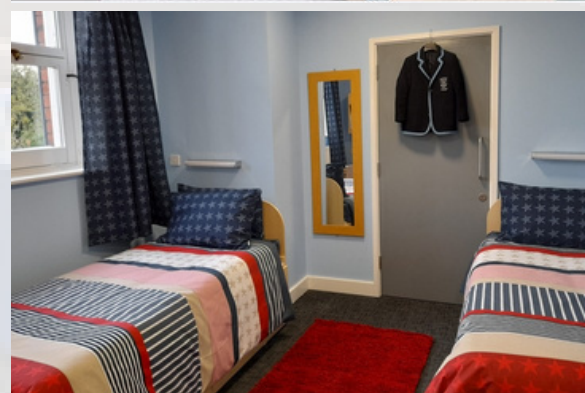
Boarding offers an outstanding opportunity for pupils to prepare for life at university, whilst pupils still benefit from excellent support from our dedicated team of House Parents.

We offer a full seven day per week programme for pupils aged 10 – 18, who live in our boarding houses: School House, Thorneycroft and Studies.

There is a great range of trips and excursions which take place each weekend. Pupils also benefit from structured prep (homework) time, allowing them to focus on their studies, knowing that members of staff are on hand to support if needed.

The boarding accommodation at Tettenhall College is superb, having had a multi-million pound refurbishment over the last 2-year period. There is a range of bedroom styles, with younger pupils sharing in a group of up to four, those in the GCSE years typically in twins or triples and our sixth formers often having the option of a single study bedroom. Our superb lounge and kitchen areas allow pupils to socialise with each other in comfort.

Whilst the large majority of our boarders are full time, we do offer both weekly and flexi boarding options, which can be an excellent choice for busy families. Day pupils can also join boarders for breakfast if they wish.



# Health & Wellbeing

At Tettenhall College, we believe that the foundation of success lies in the wellbeing of our pupils.

We are deeply committed to creating a nurturing environment where health and happiness are prioritised, enabling our senior school pupils to reach their full potential. By fostering a supportive culture that values individual needs, we ensure that every pupil can thrive academically and develop into confident, compassionate global citizens.

Our supportive environment is designed to nurture both the mental and physical wellbeing of every pupil. We recognise that the senior school years can be both exciting and demanding, as pupils prepare for to sit formal examinations and navigate growth and change. To ensure their success, we provide a robust network of care through our dedicated pastoral team, form tutors, and access to wellbeing, health and counselling services.

We actively promote a culture of openness, encouraging pupils to discuss any challenges they face, whether academic, personal, or social. Our PHSE provision was specifically praised in our most recent ISI inspection, allowing pupils opportunities to consider topics such as managing stress, building resilience, and maintaining a healthy work-life balance.

Our approach is proactive, equipping pupils with the tools they need to navigate this pivotal stage in their lives.

We place equal importance on physical health, offering our pupils access to an extensive range of top-tier sports and recreational facilities, weekly timetabled curriculum lessons, diverse extra-curricular activities, and our highly popular Enrichment Programme. Additionally, we promote initiatives that emphasize physical activity as an essential component of a healthy lifestyle.

Nutritious, balanced meals are provided in our beautiful dining hall, and we encourage pupils to make informed choices about their health and fitness.

At Tettenhall College, we are committed to fostering an environment where pupils feel valued, supported, and empowered. By prioritising health and wellbeing, we ensure that each individual is equipped not only to excel academically but also to develop the emotional and social intelligence needed to contribute meaningfully to the wider world.

In this way, we help our senior school pupils grow into well-rounded, resilient, and successful young adults.







# ACADEMIC RIGOUR & CURRICULUM INFORMATION





## CORE SUBJECTS





# English Language & Literature

Contact  
Email  
Course  
Exam Board

Miss M Uttley  
[muettcoll.co.uk](mailto:muettcoll.co.uk)  
GCSE English Language  
OCR

GCSE English Language enables pupils to explore communication, culture and creativity, to develop independent and critical thinking skills, and to engage with the richness of our language and literary heritage. Pupils are encouraged to read high-quality texts across a range of familiar genres and styles, to support them in acquiring a love of reading. They are also given the opportunity to experiment with their own writing in a range of contexts and styles.

GCSE English Literature develops pupils' ability to engage critically with and explore a variety of texts across the major genres, including modern texts and texts from different cultures, as well as classic literature. Underpinned by a skills-based approach, the emphasis is on building pupils' confidence in developing and articulating fresh and individual responses to exciting and engaging texts.

## Year 10 Outline of Study

### English Language examination preparation

Pupils will develop their comprehension, language analysis, critical reading and comparative analysis skills. They will explore strategies for approaching extracts from unseen prose fiction. They will build on and extend existing creative writing skills and develop their ability to write for different audiences and purposes.

### English Literature examination preparation

Pupils will complete their preliminary study of the selected modern prose or drama, 19th century prose and themed poetry.

### Spoken language

Pupils will present and prepare a range of individual talks.

## Year 11 Outline of Study

### Content

English Language examination preparation  
Year 10 skills will continue to be developed and refined.

English Literature examination preparation  
Pupils will complete their study of the selected Shakespeare text.

Examination practice and revision will take place for each of the examinations.

**Assessment** – There are four written examinations (each 2 hours)

English Language:

- Communicating Information & ideas 50%
- Exploring effects and impact 50%
- Spoken language. Non-examined assessment 0%

English Literature:

- Exploring modern and heritage texts 50%
- Exploring poetry and Shakespeare 50%



# EAL (English as an Additional Language)

Contact  
Email  
Course  
Exam Board

Mr A Harding  
[ahettcoll.co.uk](mailto:ahettcoll.co.uk)  
EAL  
Edexcel or Trinity College

The English as an Additional Language curriculum seeks to develop international pupils' language competency, to support their access to the breadth of all subjects in the curriculum, as well as driving them towards individual success and achievement.

Pupils develop all four of the language skills: reading, writing, speaking and listening. This is assessed using rigorous, internationally recognised examinations, including Trinity College London examinations and the Edexcel International GCSE in English as a Second Language. Entry into examinations are dependent upon language acquisition.

## Year 10 & 11 Outline of Study

### The course will focus on:

Reading development of all intensive reading skills

Writing a range of texts, including letters, emails, articles, essays, reviews and summaries

Listening development of all intensive listening skills

Speaking using a range of spoken functions relevant to the level, to communicate in formal interaction, including presentation and discussion

Vocabulary A range of topics relevant to the examinations syllabus, including:

- Travel
- Money
- Fashion
- Rules and regulations
- Health and fitness
- Learning a foreign language
- Society and living standards
- The world of work
- The environment

Grammar: Structures relevant to B1/B2 (CEFR)

Project skills:

- Research techniques
- Referencing
- Project management
- Report-writing & presentation
- Evaluation

### Assessment:

Edexcel IGCSE English as an Additional Language

1 hour Reading examination, externally assessed

45 minute Listening examination, externally assessed.

1 hour 15 minute Writing examination, externally assessed.

1 x 2-hour Reading and Writing examination, externally assessed.

23 minute Speaking examination, externally assessed.

Trinity ISE

1 x 2-hour Reading and Writing examination, externally assessed.

1 x 20 minute Speaking and Listening assessment, externally assessed.

Edexcel Higher Project Qualification

Planning, production, presentation and evaluation of a 2500-word project on a topic of your own choice.

$$\left(\frac{a}{b}\right)^{-n} = \left(\frac{b}{a}\right)^n$$

# Mathematics

Contact  
Email  
Course  
Exam Board

Mrs S Gough  
sac@tettcoll.co.uk  
GCSE Mathematics  
Edexcel

All pupils are required to study mathematics to GCSE level. Mathematics is a challenging subject requiring pupils to be adaptable and determined in order to solve a variety of interesting and interlinked problems. The GCSE covers the following main content areas: Number, Algebra, Ratio, Proportion, Rates of Change, Geometry, Probability and Statistics. It can be completed at either the higher or foundation level.

## Year 10 & 11 Outline of Study

### Foundation Content

Topic 1 – Number  
Topic 2 – Algebra  
Topic 3 – Graphs, tables and charts  
Topic 4 – Fractions and percentages  
Topic 5 – Equations, inequalities and sequences  
Topic 6 – Angles  
Topic 7 – Averages and range  
Topic 8 – Perimeter, area and volume 1  
Topic 9 – Graphs  
Topic 10 – Transformations  
Topic 11 – Ratio and proportion  
Topic 12 – Right-angled triangles  
Topic 13 – Probability  
Topic 14 – Multiplicative reasoning  
Topic 15 – Constructions, loci and bearings  
Topic 16 – Quadratic equations and graphs  
Topic 17 – Perimeter, area and volume 2  
Topic 18 – Fractions, indices and standard form  
Topic 19 – Congruence, similarity and vectors  
Topic 20 – More Algebra

### Higher Content

Topic 1 – Number  
Topic 2 – Algebra  
Topic 3 – Interpreting and representing data  
Topic 4 – Fractions, ratio and percentages  
Topic 5 – Angles and trigonometry  
Topic 6 – Graphs  
Topic 7 – Area and volume  
Topic 8 – Transformations and constructions  
Topic 9 – Equations and inequalities  
Topic 10 – Probability  
Topic 11 – Multiplicative reasoning  
Topic 12 – Similarity and congruence  
Topic 13 – More trigonometry  
Topic 14 – Further statistics  
Topic 15 – Equations and graphs  
Topic 16 – Circle theorems  
Topic 17 – More algebra  
Topic 18 – Vectors and geometric proof  
Topic 19 – Proportion and graphs

### Assessment

### % of overall marks

1. Non-calculator paper worth 80 marks lasting 1 hour 30 minutes	33.3%
2. Calculator paper worth 80 marks lasting 1 hour 30 minutes	33.3%
3. Calculator paper worth 80 marks lasting 1 hour 30 minutes	33.3%



# Biology

Contact  
Email  
Course  
Exam Board

Dr S Buxton  
[sbnetettcoll.co.uk](mailto:sbnetettcoll.co.uk)  
GCSE Biology  
Edexcel

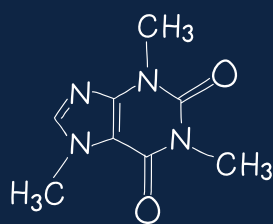
Biology is an interesting and progressive science that involves a lot of investigation and practical work. Modern developments in medicine and ecology have meant that a good understanding of this subject is vital for a balanced education. The course offers an up-to-date understanding of modern developments in Biology.

## Year 10 Outline of Study

Content	Assessment	% of overall marks
Topic 1 – Key concepts in Biology – 1	Sat at the end of Year 11	50%
Topic 2 – Cells and control	Written examination	
Topic 3 – Genetics	1 hour and 45 minutes	
Topic 4 – Natural selection and genetic modification	100 marks	
Topic 5 – Health, disease and the development of medicines.		

## Year 11 Outline of Study

Content	Assessment	% of overall marks
Topic 1 – Key concepts in Biology – 2	Sat at the end of Year 11	50%
Topic 6 – Plant structures and their functions	Written examination	
Topic 7 – Animal coordination, control and homeostasis	1 hour and 45 minutes	
Topic 8 – Exchange and transport in animals	100 marks	
Topic 9 – Ecosystems and material cycles		



# Chemistry

Contact  
Email  
Course  
Exam Board

Dr S Buxton  
sbn@tettcoll.co.uk  
GCSE Chemistry  
Edexcel

Chemistry, through a series of well-designed experimental and practical activities, integrated with theory, stimulates pupils' curiosity, interest and enjoyment of the subject. In addition, the department seeks to enable pupils to acquire sufficient knowledge and understanding to become confident citizens in a technological world, or to provide a sound foundation for further study at university level, in courses such as Chemistry, Medicine, Engineering, Pharmaceutical based courses and Forensic Science, amongst many others.

## Year 10 Outline of Study

### Content

Topic 1 – Overarching concepts in Chemistry: atomic structure, the periodic table, ionic bonding, covalent bonding, types of substance, calculations involving masses  
Topic 2 – States of matter  
Topic 3 – Methods of separating and purifying substances  
Topic 4 – Acids  
Topic 5 – Obtaining and using metals  
Topic 6 – Electrolytic processes  
Topic 7 – Reversible reactions and equilibria  
Topic 8 – Transition metals, alloys and corrosion  
Topic 9 – Quantitative analysis  
Topic 10 – Dynamic equilibria and calculations involving volumes of gases  
Topic 11 – Chemical cells and fuel cells

### Assessment

Sat at the end of Year 11  
Written examination  
1 hour and 45 minutes  
100 marks

### % of overall marks

50%

## Year 11 Outline of Study

### Content

Topic 1 – Overarching concepts in Chemistry: atomic structure, the periodic table, ionic bonding, covalent bonding, types of substance, calculations involving masses  
Topic 12 – Groups 1, 7 and 0  
Topic 13 – Rates of reaction  
Topic 14 – Fuels  
Topic 15 – Heat energy changes in chemical reactions  
Topic 16 – Earth and atmospheric science  
Topic 17 – Qualitative analysis: tests for ions  
Topic 18 – Hydrocarbons  
Topic 19 – Polymers  
Topic 20 – Alcohols and carboxylic acids  
Topic 21 – Bulk and surface properties of matter including nanoparticles

### Assessment

Sat at the end of Year 11  
Written examination  
1 hour and 45 minutes  
100 marks

### % of overall marks

50%



# Physics

Contact  
Email  
Course  
Exam Board

Dr S Buxton  
sbn@tettcoll.co.uk  
GCSE Physics  
Edexcel

Physics is the science of the universe. All modern developments in travel, communications and leisure come from discoveries made in physics. At Tettenhall College, we aim to capture the interest of our pupils with investigation and experimentation. We want our pupils to be scientists of the future and aim to develop enquiring minds in confident and able pupils.

## Year 10 Outline of Study

### Content

Topic 1 – Concepts of Physics: motion, forces and conservation of energy  
Topic 2 – Waves  
Topic 3 – Light and the electromagnetic spectrum  
Topic 4 – Particle model – 1  
Topic 5 – Radioactivity  
Topic 6 – Astronomy

### Assessment

Sat at the end of Year 11  
Written examination  
1 hour and 45 minutes  
100 marks

### % of overall marks

50%

## Year 11 Outline of Study

### Content

Topic 7 – Energy – Forces doing work  
Topic 8 – Forces and their effects  
Topic 9 – Electricity and circuits  
Topic 10 – Static electricity  
Topic 11 – Magnetism and the motor effect  
Topic 12 – Electromagnetic induction  
Topic 13 – Particle model – 2  
Topic 14 – Forces and matter

### Assessment

Sat at the end of Year 11  
Written examination  
1 hour and 45 minutes  
100 marks

### % of overall marks

50%



# Combined Science

Contact  
Email  
Course  
Exam Board

Dr S Buxton  
[sbn@tettcoll.co.uk](mailto:sbn@tettcoll.co.uk)  
Combined Science  
Edexcel

GCSE study in the sciences provides the foundation for understanding the material world. Scientific understanding is changing our lives and is vital to the world's future prosperity. All pupils should learn essential aspects of the knowledge, methods, processes and uses of science. Combined Science offers pupils two GCSE grades, whilst covering Biology, Chemistry and Physics.

## Year 10 Outline of Study

### Biology 1

CB1 Key concepts in Biology  
CB2 Cells and control  
CB3 Genetics  
CB4 Natural selection and genetic modification  
CB5 Health, disease and medicines

### Chemistry 1

CC1 States of Matter  
CC2 Methods of separating and Purifying substances  
CC3 Atomic structure  
CC4 The Periodic table  
CC5,6,7 Types of bonding  
CC8 Chemical changes  
CC9 Calculations  
CC10- 12 Extracting metals and equilibria

## Year 11 Outline of Study

### Biology 2

CB6 Plant structures and their functions  
CB7 Animal coordination, control and homeostasis  
CB8 Exchange and transport in animals  
CB9 Ecosystems and material cycles

### Chemistry 2

CC13 Groups in the periodic table  
CC14- 15 Rates of reaction and energy changes  
CC16- 17 Fuels and earth science

### Assessment

Assessed at the end of Year 11 by 6 papers, each of 75 minutes.  
All subjects are equally weighted, counting for 16.67 % of the final mark.

### Physics 1

CP1 Motion  
CP2 Forces  
CP3 Conservation of energy  
CP4 Waves  
CP5 Light and the electromagnetic spectrum  
CP6 Radioactivity

### Physics 2

CP7 Energy and forces doing work  
CP8 Forces and their effects  
CP9 Electricity and circuits  
CP10 Magnetism and the Motor effect  
CP11 Electromagnetic induction  
CP12 Particle model  
CP13 Forces and matter

The teaching is organised around topics and the four skills. Candidates will be required to listen and respond to different types of language; communicate in speech for a variety of purposes; read and respond to different types of written language; communicate in writing for a variety of purposes; use and understand a range of vocabulary and structures; understand and apply the grammar of the language in the range of contexts given below.

## Year 10 & 11 Outline of Study

### Content

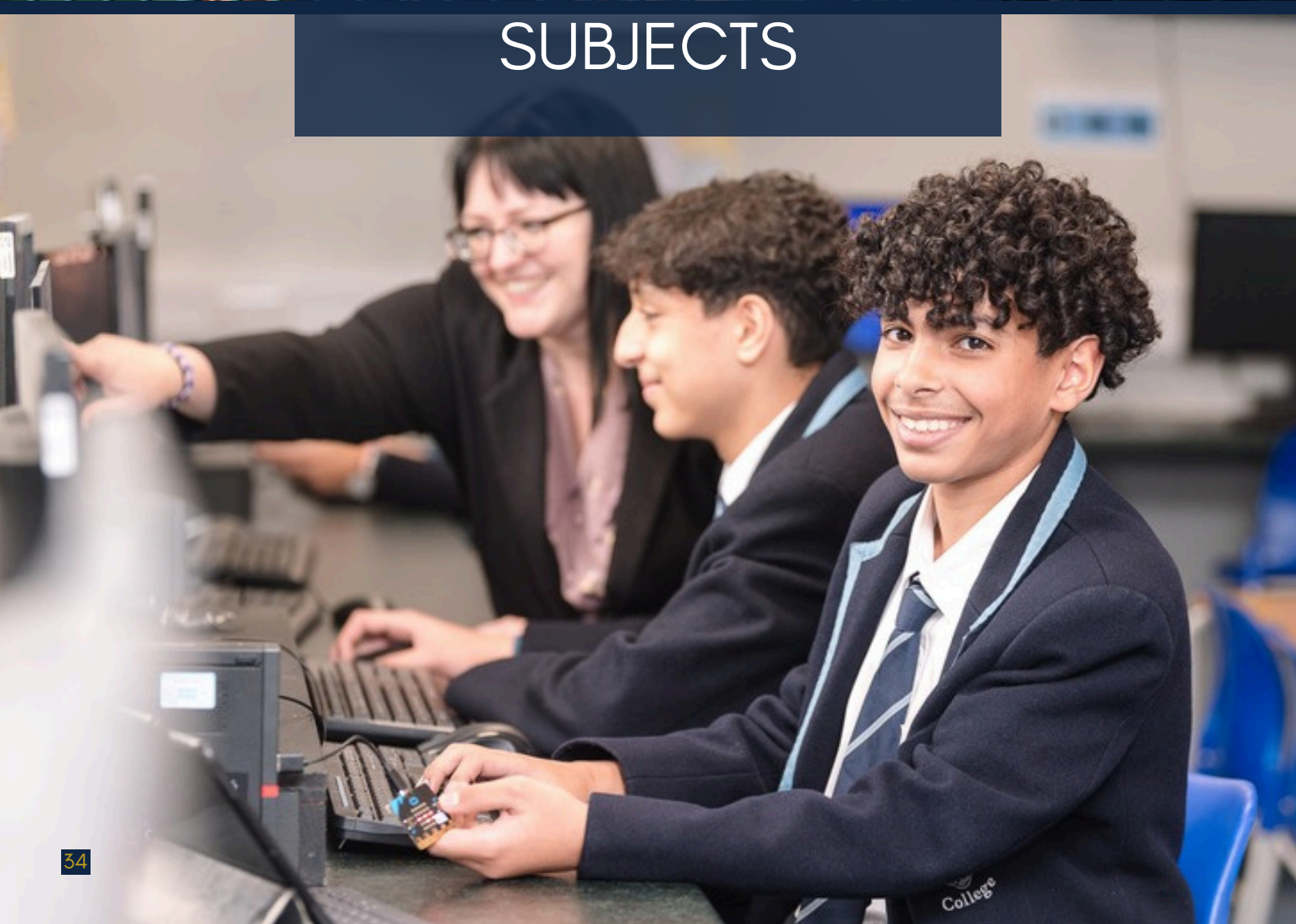
- Me, my family and friends
- Home, town, neighbourhood and region
- My studies
- Free time activities (includes music, cinema, TV, food, sport)
- Healthy / unhealthy eating
- Life at school
- Customs and festivals
- Travel and Tourism
- Education post-16
- Marriage and partnership
- Technology in everyday life
- Social media
- Global issues
- The environment
- Poverty / homelessness
- Jobs, career choices and ambition

MFL is assessed in the following ways:

Assessment	% of overall marks
Written examination: 1 hour (Foundation), 1 hour 15 minutes (Higher)	25%
Speaking (Non-examination assessment) 7-9 minutes (Foundation), 10-12 minutes (Higher)	25%
Reading examination: 45 minutes (Foundation), 1 hour (Higher)	25%
Listening examination: 35 minutes (Foundation), 45 minutes (Higher)	25%



# OPTION SUBJECTS





# Art & Design

Contact  
Email  
Course  
Exam Board

Mrs K Simmonds-Vaughan  
ksvetettcoll.co.uk  
GCSE Art & Design  
AQA

GCSE Art and Design is a broad course offering the pupil an opportunity to engage, explore and experiment with materials and ideas. It will challenge you to come up with decisions as you creatively and actively look for solutions to set design problems. Art and Design can be discovered everywhere and in many different formats as the creative industries continue to grow. Art and Design also enables us to question the world we live in and our place within it. It also enables us to cultivate empathy for others and explore a range of different subject matters through the use of different techniques and processes.

## Year 10 Outline of Study

### Content

Personal Portfolio of Evidence.

- 1.Sketchbook/mounted preparatory/research sheets.
- 2.Final pieces (3D/ceramics, printing, photography, graphics, drawing and painting).

Guidance, demonstrations and instructions are given enabling the pupil the best opportunity of passing the coursework component.

### Assessment

Teacher based internal assessment, according to published examination board assessment objectives.

- 1.Develop
- 2.Refine
- 3.Record
4. Present

### % of overall marks

60%

## Year 11 Outline of Study

### Content

A continuation of the personal portfolio, concluding in a GCSE practice examination.

Externally set examination theme released in January. Followed by 12 weeks of preparation time. Used as a starting point, a visual journey and document is developed in response to this theme in relation to the four assessment objectives. Continual teacher/pupil dialogue ensures that the interpretation is established and done according to the assessment criteria.

### Assessment

As above.

Examination externally set.  
Internally marked and externally moderated.

### % of overall marks

40%



# Business

Contact  
Email  
Course  
Exam Board

Mr D Matthews  
dmetettcoll.co.uk  
GCSE Business  
OCR

Business is a dynamic and popular subject that encourages pupils to be inspired and challenged by a broad, coherent and satisfying course of study. Pupils are able to gain an insight into human resource management, marketing and enterprise and the importance of financial management. Studying the wider economic environment is also a core component of this GCSE. Pupils will be actively involved and encouraged to develop as effective and independent thinkers, who will be equipped to take up a wide variety of employment opportunities.

## Year 10 & 11 Outline of Study

### Content

#### Business 1

Business Activity  
Marketing  
People

### Assessment

#### Business 1 Paper

Business activity  
Marketing and people  
1 hour 30 minutes  
80 marks

### % of overall marks

50%

#### Business 2

Operations / production  
Finance  
Influence on business  
The independent nature of business (synoptic content)

#### Business 2 Paper

Operations, finance and influences on business  
1 hour 30 minutes  
80 marks

50%



# Computer Science

Contact  
Email  
Course  
Exam Board

Miss A O'Brien  
aob@tettcoll.co.uk  
A Level Computer Science  
OCR

Pupils of GCSE Computer Science will gain practical experience of designing, writing, and testing computer programs. They will also develop the ability to reason, explain and evaluate computing solutions, and develop awareness of current and emerging trends. The qualification will equip learners with a knowledge and understanding of the fundamental principles and concepts of the subject, including the computational thinking skills to analyse problems and design solutions across a range of contexts.

The content has been designed not only to allow for a solid basis of understanding computer science elements but to engage learners and get them thinking about real world applications. Computer scientists have an almost unparalleled opportunity to pursue careers in science, computing and mathematics, with the skills that the increasingly systems-driven world is crying out for.

## Outline of Study

### Content

#### Computer Systems

- Systems Architecture
- Networks
- System security
- System software
- Ethical, legal, cultural and environmental concerns.

#### Algorithms and programming

- Algorithms \*
- Programming techniques
- Logic and languages
- Data representation.

\* Algorithm questions are not exclusive to component 02 and can be assessed in either component.

**Practical Programming - Pupils will also undertake practical programming tasks to solve a series of give problems, although these do not contribute towards the assessed grade.**

### Assessment

#### Computer Systems (01)

80 marks  
1 hour and 30 minutes  
Written paper  
(no calculators allowed)

### % of overall marks

50%

#### Algorithms and Programming (02)

80 marks  
1 hour and 30 minutes  
Written paper  
(no calculators allowed)

50%



# Drama

Contact  
Email  
Course  
Exam Board

Miss M Uttley  
mu@tettcoll.co.uk  
GCSE Drama  
OCR

GCSE Drama is a highly practical, engaging and creative course. It provides pupils with the opportunity to analyse live theatre performances, explore drama as a practical art form, and to work independently to create both scripted and devised drama performances. Pupils will learn the theory behind the practice of creating drama and will apply this theory to their own devising and performing. In addition to performing, devising and directing, pupils are able to present design skills for assessment. GCSE Drama enables pupils to develop a wide range of essential transferrable skills such as independence, time-management, confidence, communication, problem-solving, planning, organisation, critical thinking, analysis and evaluation.

## Year 10 Outline of Study

### Content

#### Devising Drama - Component 01 / 02

Pupils explore a stimulus provided by the examination board. They will work in groups to create their own devised drama based on their exploration. In addition to the performance, pupils will be marked on an accompanying portfolio with evidence of the process and decisions made whilst creating and developing their performance.

Pupils can work as either performers or designers for this task.

**Internally assessed performance and written portfolio. 30%**

#### Presenting and Performing Texts - Component 02 / 03

Pupils explore a text and perform two scenes to a Visiting Examiner. Pupils can work as either performers or designers completing a written portfolio and a final performance showcase demonstrating their chosen skills in a live performance. Pupils will perform in, or design for, two performances from one text.

**Written portfolio and showcase performance to Visiting Examiner. 30%**

## Year 11 Outline of Study

### Content

Presenting and Performing Texts - Component 02 / 03 completed  
Drama: Performance and Response - Component 05 - Examination Preparation

Pupils study one performance text in detail from a given list.

Section A of the examination will contain questions on the selected text. These questions assess pupils' knowledge and understanding of how drama is developed and performed.

Section B, pupils will be required to analyse and evaluate a live theatre performance they have seen using accurate terminology.

**Written examination - 90 minutes 40%**



# Geography

Contact Miss L Cross  
Email [lc@tettcoll.co.uk](mailto:lc@tettcoll.co.uk)  
Course GCSE Geography  
Exam Board Edexcel

Geography is a continuously evolving subject that involves us all – it looks at the key global issues that are having an impact today and which will affect our futures. It helps give a greater awareness of how we behave, emphasising the importance of the relationship between people in different countries, their impact on the environment and their impact on each other.

## Content

### Component 1 : The Physical Environment

- The changing landscape of the UK including sub-topics of Coasts and Rivers.
- Weather Hazards and Climate change with study of tropical storms and droughts.
- Ecosystems, Biodiversity and Management with study of tropical rainforests and deciduous forests.

### Component 2 : The Human Environment

- Changing Cities with study of contrasting cities in the UK and a developing country.
- Global Development with a study of India as an emerging country.
- Resource Management of energy, food and water with a study of energy resource management.

### Component 3 : Geographical Investigations

- Investigation of UK Challenges.
- Fieldwork in both a physical and a human investigation.

All three examinations include multiple-choice questions, short open, open response, calculations and 8-mark extended writing questions.

## Assessment

## % of overall marks

Examination at the end of Year 11  
Paper One: The Physical Environment  
1 hour 30 minutes  
94 marks

37.5%

Paper Two: The Human Environment  
1 hour 30 minutes  
94 marks

37.5%

Paper Three: Geographical Investigations  
1 hour 15 minutes  
64 marks

25%



# History

Contact Miss L Cross  
Email [lc@tettcoll.co.uk](mailto:lc@tettcoll.co.uk)  
Course GCSE History  
Exam Board OCR

GCSE History is concerned primarily with the political history of Britain, Europe and the World from the tenth century to the twenty-first Century. The examinations take place at the end of Year 11 enabling the pupils to slowly build up their skills and knowledge throughout Year 10 and 11. The course aims to provide the necessary skills to enable pupils to communicate knowledge and understanding of history to a high level. Pupils will also develop explanation and analysis in relation to historical events and show understanding, analysis and evaluation of source material.

## Content

### Component 1: Period study with non-British depth study

- International relations: the changing international order 1918–1975

Learners will explore key developments and issues of this period to understand their impact on shaping the 20th and early 21st-century world.

- The USA 1919 – 1948

Learners will study the US from the end of WWI to WWII, focusing on economic changes, social inequality, and the early Civil Rights movement.

### Component 2 – Thematic Study

- Power: Monarchy and Democracy in Britain c.1000 to 2014

Learners will explore how power in Britain evolved from monarchy to parliamentary democracy between c.1000 and 2014, examining key individuals, institutions, claims to power, methods of maintaining authority, and challenges to it over time.

### Component 3 – British depth study with a study of the historic environment

- The English Reformation with castles: Form and Function

Learners will study the English Reformation, focusing on its religious, social, and economic impacts, and explore Kenilworth Castle as a historical site to understand its changing roles and how evidence is used to interpret history.

## Assessment

## % of overall marks

External examination at the end of Year 11  
1hr 45 minute written paper

50%

External examination at the end of Year 11  
1 hour written paper

25%

External examination at the end of Year 11  
1 hour 15 minutes written paper

25%



# Music

Contact Mr G Howard  
Email [gjhettcoll.co.uk](mailto:gjhettcoll.co.uk)  
Course GCSE Music  
Exam Board Edexcel

Preparation for GCSE assessment involves three areas of study:

1. Performance – development of practical music-making skills (solo and ensemble)
2. Composing – learning to create music in different styles including the use of music technology
3. Appraising – study of 8 set works covering a wide range of musical styles

## Year 10 Outline of Study

### Content

Practical – Solo performance on chosen instrument or voice (Autumn Term)  
Practical – Duet or Ensemble (Spring Term)

A range of compositions will be developed in Year 10 including Minimalism, Dance Music and Orchestral Film/Game Music, resulting in a Free Composition lasting no less than 2 minutes.

Exploration of Set Works:  
Beethoven, Star Wars, Defying Gravity, Queen, Purcell and Afro Celt Sound System.

### Assessment

Final Performances in Year 11

### % of overall marks

15%

By end of June

## Year 11 Outline of Study

### Content

- Practical – Final Solo Performance lasting at least 2 minutes
- Practical – Duet or Ensemble, lasting at least 2 minutes
- Creative task – Composition to a set brief (published by exam board)
- Listening and Appraising – Learning and revising 8 set works and improving listening skills, including study of Bach and Esperanza Spalding to complete set works

### Assessment

By end of Autumn Term

### % of overall marks

15%

By end of Spring Term

15%

By end of April

15%

Examination in May/June

40%



# Physical Education

Contact Miss K Slater  
Email [ksr@tettcoll.co.uk](mailto:ksr@tettcoll.co.uk)  
Course GCSE Physical Education  
Exam Board Edexcel

Taking the GCSE PE course allows anyone with an interest in sport to develop their knowledge and understanding. Covering aspects such as applied anatomy and physiology along with sports psychology, GCSE PE delivered in both a theoretical and practical setting. Assessment of the pupils' practical ability in three activities allows for sporting talent to be recognised and rewarded.

## Year 10 Outline of Study

### Content

Component 1 – Fitness and Body Systems

- Topic 1: Applied anatomy and physiology
- Topic 3: Physical training

Component 2 – Health and Performance

- Topic 1: Health, fitness and well-being
- Topic 2: Sports psychology

### Assessment

Part of written examination: Component 1: 1 hour 45 minutes (end of Year 11)

### % of overall marks

24%

Part of written examination: Component 2: 1 hour 15 minutes (end of Year 11)

16%

## Year 11 Outline of Study

### Content

Component 1 – Fitness and Body Systems

- Topic 2: Movement analysis

Component 2 – Health and Performance

- Topic 3: Socio-cultural influences

Component 3 – Practical Performance

- Skills during individual and team activities
- General performance skills

Component 4: Personal Exercise Programme (PEP)

- Aim and planning analysis
- Carrying out and monitoring the PEP
- Evaluation of the PEP

### Assessment

Part of written examination: Component 1: 1 hour 45 minutes (end of Year 11)

### % of overall marks

36%

Part of written examination: Component 2: 1 hour 15 minutes (end of Year 11)

24%

Pupils complete three physical activities (end of Year 11)

30%

Controlled Assessment  
(end of Year 11)

10%



# Religious Studies

Contact

Email

Course

Exam Board

Ms N Minaker

[nmetettcoll.co.uk](mailto:nmetettcoll.co.uk)

GCSE Religious Studies

Eduqas

Preparation for GCSE assessment involves three areas of study:

1. Performance – development of practical music-making skills (solo and ensemble)
2. Composing – learning to create music in different styles including the use of music technology
3. Appraising – study of 8 set works covering a wide range of musical styles

## Year 10 Outline of Study

### Content

Component 1: Religious, philosophical and ethical studies in the modern world, comprising four topics

- Issues of relationships
- Issues of life and death
- Issues of good and evil
- Issues of human rights

Component 2: Christianity, comprising

- Beliefs and Teachings
- Practices

## Year 11 Outline of Study

### Content

Component 3: Islam, comprising

- Beliefs and Teachings
- Practices

### Assessments end of Year 11

### % of overall marks

2 hour examination

50%

1 hour examination

25%

1 hour examination

25%

# Our Admissions Process

Children wishing to join the Senior School at Tettenhall College into Years 7, 8 and 9 will be invited to attend the College Entrance Assessment in the January prior to entry the following September. For pupils joining the College from outside the UK, please speak with the Admissions Team who will be happy to explain how we complete these assessments remotely.

It is essential that any child wishing to sit the Entrance Assessment is registered well in advance. We strongly recommend that you secure your place by the end of the preceding Autumn term, as places will be capped. The Entrance Assessment is a full morning of activities, including the formal academic assessments which are run in conjunction with Cambridge CEM. These include Numeracy, Literacy and Non-Verbal Reasoning. A series of additional assessment activities will also take place during the morning including a handwritten Creative Writing Task, team participation exercises and other interactive sessions.

Once the assessments have been marked, individual offers will then be made. For pupils wishing to be considered for a Scholarship, these awards will be assessed either on the day of the Entrance Assessment or in the week before this. Academic Scholarships will be assessed via the Entrance Assessment, with the very highest performing pupils being invited for an interview with the Headmaster, prior to any award decisions being made.

For those pupils wishing to apply for a Sport, Art, Music or Performing Arts scholarship, individual assessments will take place during the week before the Entrance Assessment. Tettenhall College is ambitiously inclusive, and we are very proud of the high quality provision offered to children with SEN requirements. For a personal chat with our Head of Academic Support (Senior), please contact the Admissions Team.

Applicants for Year 10 should contact the Admissions Team to discuss the assessment process for entry at this point.



Tettenhall College